

ALBOURNE PARISH COUNCIL

Minutes of the Council meeting held on Monday 14th December 2009 in the Albourne Village Hall.

Present: Cllr Graham Stafford (Chairman), Cllr Gwyn Price, Cllr John Gooch, Cllr Jerry Butler, Cllr Lesley Ritchie and Cllr Robert Dunckley.

Also present 1 Member of the public and West Sussex County Cllr Griffiths.

The Chairman opened the meeting and thanked everyone for their support throughout the year.

225. Apologies for Absence – Cllr Gratton, Cllr Seward may be late.

226. Declarations of Interest – None

227. Approval of Minutes.

Minutes signed by Chairman. Proposed: Cllr Price, seconded Cllr Dunckley.

228. Matters Arising – None.

229. Reports from

(i) WSCC. Peter Griffiths Report:

Cllr Griffiths needed a decision from the PC whether to proceed further with the Safer Routes to School plan (see attachments to the minutes).

Various discussions took place regarding a needed improvement for the bus routes to school, and the varying users who will benefit from this pathway.

It was agreed in principal by all Councillors present to accept the Safer Routes to School proposal for Albourne School, subject to confirmation that the scheme would include installation of a Speed Indicator Device (SID) at a point to be agreed with the WSCC Safety Team. Proposed Cllr Price, seconded Cllr Butler.

The Parish Council agreed they would be prepared to contribute to the cost of this SID from the balance of s106 monies derived from Inholmes Farm development. The PC indicated that they wished to be consulted on both the type and location of the device.

Cllr Griffiths informed members the Traffic Order for the B2116 should be in Spring 2010. Cllr Stafford informed Cllr Griffiths of a recent accident travelling westbound. The vehicle had ended up in Mr Emery's field.

Thanks extended to Cllr Griffiths for his continued support. Cllr Griffiths left at 8.25pm.

Cllr Seward arrived during Cllr Griffiths report.

(ii) MSDC Sue Seward report:

Safer Routes to school, MSDC Leisure Dept have not yet responded formally to WSCC, it is with David Waite.

There are difficulties with the work on the Core Strategy.

The budget will increase 2.5%, but hope to not reduce services too much.

There is a 3 month consultation taking place with staff regarding redundancy packages.

Gary Marsh has taken over Sue's role in the leadership changes which will allow Sue more time for her Parishes.

Nick Rogers from MSDC is looking into the Gospel Hall issue we raised as Stephen King is on leave.

Cllr Seward will also look into the Coombe Hill Sand school Lighting Illumination issue, and obtain an update on Sam Orr's mobile home enforcement we reported to John Arnold as MSDC.

230. Planning Issues – None

231. Chairman's Report – Mrs Joan Moore mentioned the northern hedge of the Millennium Gardens needs cutting back – Clerk to talk to Barcombe Landscapes.

Mrs Moore is no longer standing as the bus co-ordinator any more, but is happy to advise on any issues. It was agreed to send a letter of thanks and some flowers to Mrs Moore in the new year. Clerk to try and establish the bus timetable links to the Albourne website.

232. Village Hall Chairman's Report

Cllr Butler informed members the four fundraising events just under £800 had been raised for the VH. More craft fairs are planned for 2010 along with other quizzes to continue the fund raising so far.

The outcome from the recent VH meeting was that one of the projects would be to change the ambience of the lighting in the VH. In the short term, no building works would be undertaken due to the lack of funds.

Initial discussions had taken place with the Clerk regarding the reduction of the Honorarium paid to help the funding situation, and also the possibility of charging the PC for the hire of the hall for meetings. All members agreed the charging for the hire of the PC meetings was a good idea. Cllr Butler extended his thanks to Cllr Price for his ongoing work with the VH lease.

233. Changes in the Parochial Church Council – Cllr Gooch

Albourne had a PCC for matters to do with the Church and Graveyard. As Twineham, Sawyers Common and Albourne shared one Rector, it was thought one PCC to serve all three churches would be best. This has now happened. The issue is the combined PCC is opening an account and it encouraging people to make donations. This fund could be accessed by the Diocese. The other churches are keen to keep their open accounts so as the donations can only be used for the upkeep of the church and graveyard. Any donations must be made to: ST BARTHOLOMEWS CHURCH OF ALBOURNE FABRIC FUND. These are protected funds and for our church only. Cllr Gooch handed out the Christmas Service sheet to members.

234. Finance and Administration

The following payments were agreed:

WSCC Salary for Nov 2009	£439.39
Clerks Expenses Nov 2009	£133.24
G. Stafford refreshments at Dec PC meeting	£ 42.70

Clerk informed members the work had been completed by Mr Randall on the VH pilot light for the hot water system.

Clerk to arrange a yearly service for the Gas system by Mr Randall.

Clerk informed members she had joined Farm Watch, a database for information on issues affecting the local area and anything which is thought to be suspicious. Cllr Stafford is also a member.

The Clerk suggested setting up an email database in the New Year of resident email addresses to keep residents informed of any issues happening locally, advertise the VH and events more frequently and also for the long term idea of a newsletter.

All members agreed this was a good idea.

235. Additional items – None

236. Exchange of information

RD- Street Light is out at the Church Lane Junction.

LR – Meeting dates for 2010 (July and December) have a error on print out.

JB – Roger Baltrop passed away. He wrote in the Parish Magazine and will be sorely missed.

Thoughts are with his family.

CP – No

GS- No

JG – Attended the MSDC Civic Service and it was very enjoyable. Held in Worth Abbey.

Meeting adjourned 9:35pm

Member of the public – Mrs Foster requested the Fly Tipping on the B2116 near Gunners Cottage be looked into.

Meeting reconvened at 9:40pm

Cllr Stafford closed the meeting with extending his thanks to all the Councillors for the continued advice and support throughout the year in looking after the village, and may it continue into 2010. Merry Christmas wishes to all.

237. Next meeting – Monday 18th January at 7:30pm

Signed: _____

Date: _____

The following pages are the details of the Safer Routes to School detail from Cllr Peter Griffiths.

Albourne C of E Primary School , Safer Routes to School Pathway project 14
December 2009

I undertook at 19 November Council meeting to provide further details of the proposed project . I have also attended November's School Governors meeting since then and answered most of their questions.

We very much want this scheme to offer wider community benefits outside of the journey to and from school and hence want it to have the whole communities support. Our concern is that significant delays in agreeing the design might have implications for retaining the scheme in our proposed capital programme. I would be very grateful if the Council at its meeting on 14 December 2009 would formally agree to the proposal. Otherwise the project will 'go to the bottom of the list' meaning at the least a 3 year delay.

Why are we proposing the path ?

Good health and sustainability are the reasons given in the community survey. In the survey results, copy attached (and re-distributed to the Governors), of those who responded, 14 - as I said in November – travel to the School from Hurstpierpoint and Sayers Common. It was encouraging to see that out of the parents who drive all or some of the time 10 out of 18 (56%) were prepared to walk or cycle to school if the improvements were made. There is also a large proportion of parents making a special journey to/from school 6 out of 9 (67%) said that they would walk or cycle instead most of the time.

Under Inholmes Farm AE/2117/05 s106 money is available for traffic management initiatives in the Albourne area. This project, which seeks to improve sustainable access to the School, and to the development, falls within those conditions and the Council indicated that it was happy to consider such a scheme in a number of meetings which I have attended.

Why not extend the School bus route ?

There is no money in the budget for this year or next. Central Government lay down strict rules on how monies are to be used, be they for School or Highways.

Why not improve the current pathway (along the B2116) ?

As previously stated by me and the SRtS officers, the width of the available highway is such that it is insufficient to build a footway with CPO. The width required a minimum of 2.0 – 2.5 m. Also a significant build up and drainage diversion would be needed and it would need a very large capital investment for which there is no budget current or in next 3 years

How much will it cost ?

Originally you may recall that MSDC quoted around £16000 as the 'Round the Albourne Village Green' path. The proposed route is attached for reference (A3 copies will be supplied by me).The current costs are as follows:

Path = £18,200

Crossing = £8,000 *

Refuge = £6,600 *

Signing and lining = £5,900 *

Junction works at B2116 = £6,200 *

NB items marked * fall within s106 conditions

The Council asked if there could be enhancements to the Car Park and the new route, without removal of the hedge , subject to a previous planning condition I believe , made the following additions to costs

New Village Hall entrance and car park = £13,900

Fencing = £4,300

Total = £60,100

If agreed by the Parish and CLC, the s.106 £20k would reduce the capital required from SRtS.

We would expect nothing financially from MSDC, however we will need their support and a legal agreement with them to gain use of the land, of which we are due to obtain shortly.

I think that answers all the questions I have noted

Peter A.D.Griffiths

WSSC Councillor Hurstpierpoint and Bolney Division

Albourne Primary School
Safer Routes to School Feasibility Study Report

Albourne Primary School is a small rural school, located in the quiet village of Albourne, just north of the South Downs. Pupils travel to the school from a wide area with approx 25% of children living within the village itself, and the remaining pupils coming from other villages in the area.

The school is situated on 'The Street' and currently has a single driveway entrance leading up to the main entrance of the school. There is also a turning circle at the end, and children arriving by taxi are dropped off here in the mornings and picked up in the afternoons. The drive is also the staff car park and there is space for one coach to set down and pick up in the mornings and afternoons. Most parents do not use this entrance so the main problem with congestion is outside the school on The Street, and Barn Close.

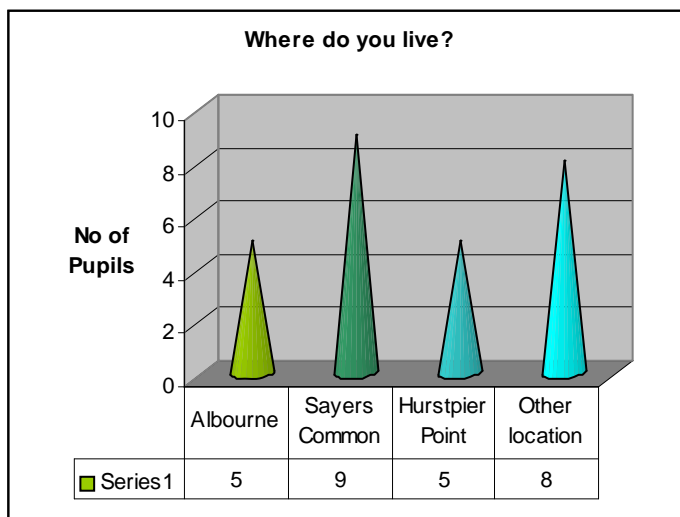


The Street gets very congested and there is a second coach, which has to park outside the school on 'The Street' making visibility here poor. This was highlighted in the schools travel plan and the SRTS team have recently had some improvement work undertaken to the outside entrance of the school. This was done to improve the safety for children getting on and off their coach in the morning and afternoon. An informal crossing point was also put in place to stop cars parking in this area so the children and parents have somewhere permanent to cross.

A part of their school travel plan the school have highlighted that most parents were driving their children to school but more children wanted to walk to school but felt that unsafe roads and crossing points, inconsiderate parking and lack of safe parking places were problems that needed looking into.

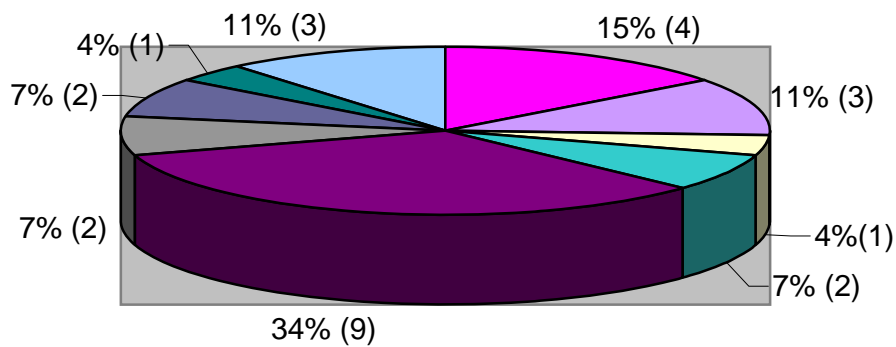
The SRTS team have recently had some improvement work undertaken to the outside entrance of the school. This was done to improve the safety for children getting on and off their coach in the morning and afternoon. An informal crossing point was also put in place to stop cars parking in this area so the children and parents have somewhere permanent to cross.

The school have also undertaken a feasibility questionnaire in January and 27 questionnaires were returned. The questionnaire introduced the idea of a new crossing point and footway through the recreation ground to provide a safer route to school for parents living in Hurstpierpoint and Sayers Common. Here are the findings.



Other locations included Fulking, Hassocks, Patcham, Henfield, Poynings, and West Grinstead.

How do you normally travel to school?



Walk	Walk/Car	Walk/Park and Walk
Park and Walk	Car	Car/Car Share
Car Share	Bus	Other

Most parents surveyed did not solely use the car for the journey to/from school. Out of those who did use the car there were: -

Two from Sayers Common, and One from Hurstpierpoint, Hassocks, Patcham, Poynings, and West Grinstead.

If you live in Hurstpierpoint and Sayers common what would make the walking route to school safer?

If the route avoided busy roads

Footpath such as the suggested overleaf rather than current multiple (partially unsighted) crossings of Henfield road. More convenient & safer crossing across b2110 with traffic calming/cameras to force drivers to reduce speed to 40mph. Significant number don't drop their speed particularly when traffic light's are on green.

A wide and continuous path from the London Road

An improvement it will make the walk/cycle to school less stressful

The ideal would be a zebra crossing instead of a refuge island a wider entrance gate accessible for double buggies, wheelchairs and a tarmac surface path.

The ideal would be a zebra crossing instead of a refuge island a wider entrance gate accessible for double buggies, wheelchairs and a tarmac surface path.

I had recently written to the parish council and agree with the proposal to place a pathway around the field. The refuge island is also a good idea but do have some concerns at the speed of some cars as they travel along the main road particularly if the lights are green and they have not had to slow down perhaps cameras is a possibility I think it is a priority to get pedestrians cyclists off the Henfield road.

The Refuge island would help, also a footpath through the park (wide enough for a buggy)

A proper footpath all the way and a safe crossing point clearly visible to traffic

Footpaths wider, and all the way to school

Wider pavements and away from the road, less traffic or at least safer roads, cycling path safe from road Albourne to Hurstpierpoint.

A continuous path wide enough to walk with a buggy and child beside you. Current route requires you to cross the busy Henfield Road several times

The path set further back from b2118 as cars still drive incredibly fast down this stretch and the path is very open and vulnerable to a car coming off the road.

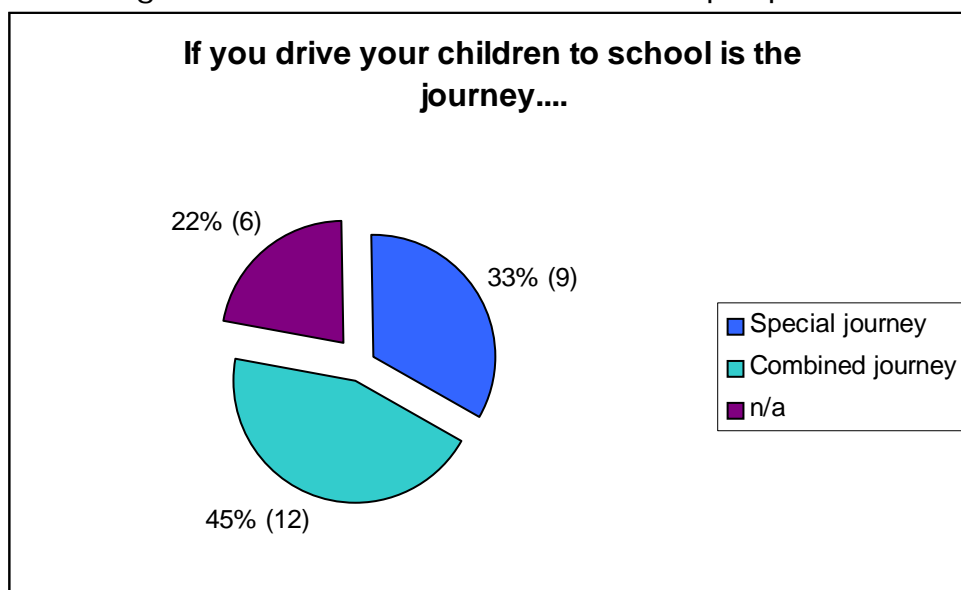
A lollipop lady at the crossing of the A23 slip road

Slow down the traffic on the main London road between traffic lights and Sayers common. Lots of cars jump the red lights but also come over the brow of the hill too fast. Where the island is proposed reduces the time to judge how fast the cars coming over the hill are going so they need to be slowed down. Also paths required on both sides of Henfield Road. Hedge to be maintained on Albourne Road to Hurstpierpoint as you quite often cant walk on the path because the hedge is overgrown.

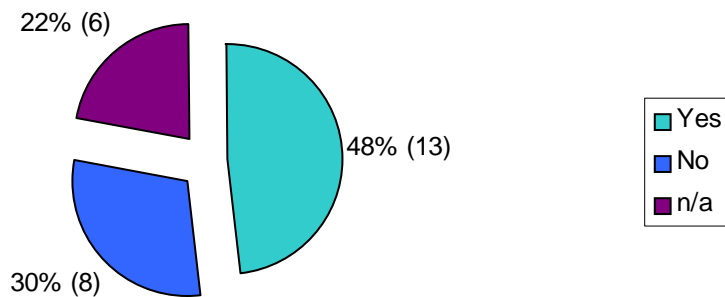
Have had cars mount the pavement in wet weather on the London Road down to Sayers common when they go too fast and loose control. Actually witnessed one flip over and go through the hedge 50 yds form where walking, the road is used as a race track.

These comments are very supportive of the proposal however things that need to be considered are:

- Width of footpath
- Speed of traffic on B2118
- Type of crossing required here
- Vegetation on main Albourne to Hurstpierpoint Road.

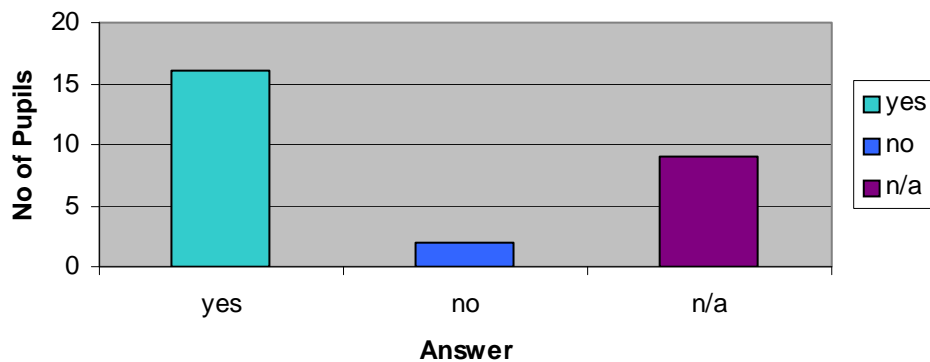


Would you walk or cycle with your child to school if a refuge island and footpath through the recreation ground was built?



It was encouraging to see that out of the parents who drive all or some of the time 10 out of 18 (56%) were prepared to walk or cycle to school if the improvements were made. There is also a large proportion of parents making a special journey to/from school 6 out of 9 (67%) said that they would walk or cycle instead most of the time.

If you live too far away to walk to school, would you consider parking and walking in with your child



If yes where would you park?

- Village hall or industrial estate but unsure of allowed to do this
- Albourne village centre car park
- Village Hall car park
- There needs to be a designated parking area somewhere close to the school
- Currently park in village hall
- Any available space
- Sometimes park near bottom of the twitten
- Cannot think of suitable sites that are available
- In the empty office car park over the road form the school
- A designated area near to school
- I currently park in Hunters Mead Close

Somewhere along the old London road
Village hall car park/lay-by if available
Roads in village for points then walk
Currently in the car park of the new offices over the road it's
convenient and safe and more accessible.
Lay-by on Albourne road into Hurst pier point

The village hall is frequently used by parents to park and walk from; however it is also evident that perhaps more parents would consider using the business unit car park on Henfield Road if they knew that they were definitely allowed to use this. Most of the units stand empty at the moment so this is a good location and avoids The Street. The school are looking into this. Perhaps a walking bus could operate from here or the Village Hall?

Any other comments?

More road signs in area telling drivers there is a school in the area. Perhaps a walking bus facility could be put in place as has been at St Lawrence to encourage more children and families to walk to school

Excellent routes suggested overleaf I would definitely use them

At present I park at the village hall and walk in, if the grass area was made hard standing this would be made easier in the more inclement weather winter months. The improvements would increase ease of walking to school

The suggested route would be better with a safe crossing at the entrance to the village hall as opposed to the children having to cross an extra road 'barn close' see suggested alteration to map on front

Removal of public pay phone box and a lay-by drop off point created instead of a new path. Some sort of traffic management or a different place for school coaches to drop off.

Would like a cycle path incorporated into the scheme suggested and up from Sayers common. Pedestrian safety immediately outside the school also needs to be addressed measures need to be put in place to make it impossible for inconsiderate parents parking directly opposite the school entrance despite constantly being told by school not to do so. These parked cars obstruct the new crossing point masking its presence from other drivers. Cars also do not always stop to let people cross there making it no safer to cross there than further along the road into Albourne the school buses also sometimes obscure the crossing.

I am all in favour of better safer access to get children to school

These changes will make no difference to us at all as we are not living in the area

Would prefer that crossing to opposite the village hall where more clearly defined, children only need to cross one road to get to school instead of two. Cars still park across the pathway, a child was hit here last year. Also if more parking made available at the village hall special matting can be placed into turf area that makes it more accessible even when wet/muddy. Spaces to be marked on. Tarmac/concrete area to encourage doubling up and thereby more parking.

If I lived in walking distance I would very much approve of the new scheme

Although this does not directly affect our route to school from home it is an improvement when travelling from the lay by in Hurst pier point back to school. This suggested footpath would certainly be safer for those travelling on foot from Sayers common.

Summary

Although a small sample of parents responded to the questionnaire the parents comments lead us to conclude that the scheme would encourage modal shift and reduce the number of cars using 'The Street' and the village hall car park.

Points that were raised that need to be considered in further planning are: -

- Width of footpath
- Speed of traffic on B2118
- Type of crossing required here
- Vegetation on main Albourne to Hurstpierpoint Road.
- Extra crossing point from village hall
- Cycle path to be included in the final design to link with Hurstpierpoint and Sayers Common